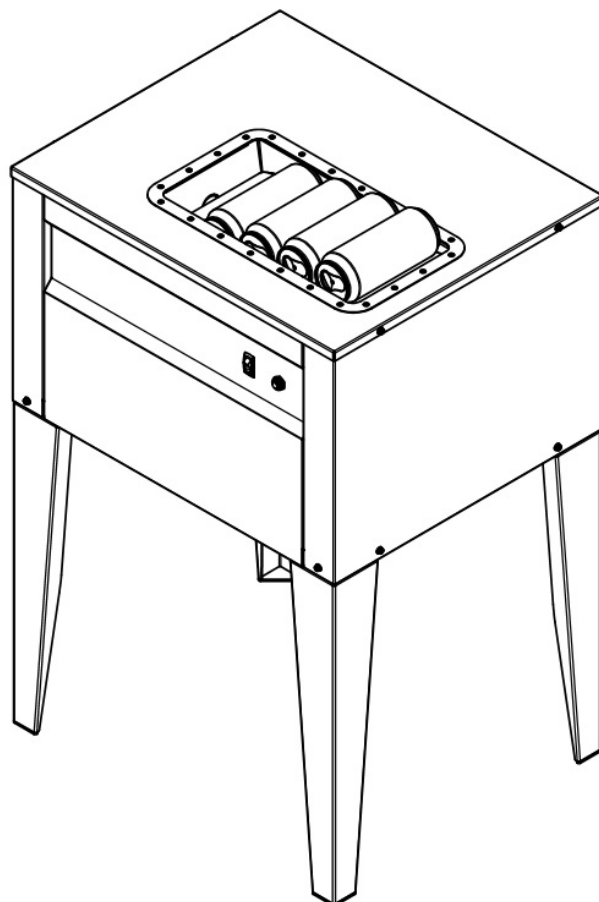




MONARCH

POWER CAN CRUSHER



MODEL 8550

- **THE ULTIMATE AID IN DISPOSING OF EMPTY ALUMINUM BEVERAGE CANS IN BARS AND RESTAURANTS**
- **CRUSHES 12 AND 16 OZ. CANS INTO A THIN WAFER TO GREATLY REDUCE RECYCLING VOLUME**

INTRODUCTION

Your Monarch Model 8550 Power Can Crusher has been designed and manufactured under rigid standards. Troyer Brothers, Inc., manufacturer of the Monarch Power Can Crusher has great interest in having your unit provide the maximum performance and service life.

This manual provides information for installation, operation and service of the unit.

READ THIS MANUAL AND TOTALLY FAMILIARIZE YOURSELF WITH ITS CONTENTS BEFORE YOU ATTEMPT TO INSTALL OR OPERATE THE UNIT.

Should a question or problem develop, contact the dealer from whom the unit was purchased. In the event your dealer is unable to supply the service you require, contact Troyer Brothers, Inc.

SAFETY PRECAUTIONS

Troyer Brothers, Inc. has made every effort to provide you with safe equipment. However, the following safety precautions must be observed:

1. Always disconnect the power supply (unplug from wall outlet) before attempting to remove a can jam, remove the top cover or, clean the unit.
2. Be certain the electrical outlet used for the power supply is fully grounded, or attach a separate ground wire to the frame of the crusher and a proper grounding source that meets national and local electrical codes.
3. Never place hands or fingers in the can inlet chamber or the crushed can discharge opening while the unit is connected to an electrical outlet.
4. Never let children operate the machine.
5. Fully instruct all personnel on the operation of the machine and on these safety precautions.

CUSTOMER RECORDS

Model Number: 8550

Serial Number: _____

FLOOR STAND ASSEMBLY

Remove the crusher body from the carton and lay it top down on a blanket or clean cardboard to protect the finish from scratches or damage. Bolt the four (4) support legs to the body with the eight 5/16" x 1" flange hex bolts (two per leg). A ratchet wrench, 8" extension and 1/2" socket are ideal tools for the assembly. Before fully tightening the bolts, be certain the outer edges of the support legs and the crusher housing are aligned. (Oversize holes in the support legs permit movement for alignment.) Screw in the four (4) leveling feet in the bottom holes of each leg until there is about 1/4" of threads still exposed. With the support legs and feet bolted in place, set the crusher upright, being certain to lift the crusher and setting it down on all (4) legs equally.

COUNTERTOP ASSEMBLY

Remove the crusher body from the carton and lay it top down on a blanket or clean cardboard to protect the finish from scratches or damage. Screw in the four (4) leveling feet in the outermost corner holes until there is about 1/4" of threads still exposed. (Micro adjustment may be needed for leveling after unit is placed on countertop.) Be sure to always maintain a minimum of 1/2" of air space under main body of crusher to allow for air circulation. For countertop operation, it will be necessary to provide an adequate size opening for the crushed cans to discharge through.

PLACING AND INSTALLING THE CRUSHER

Ideally, locate the crusher under or near the bar so the crusher is easily accessible when empty beverage cans are removed from the bar or tables to permit immediate crushing of the containers. The crusher is equipped with a 3-prong grounding type attachment plug that provides grounding of the unit when plugged into a fully grounded outlet. If a fully grounded outlet plug is not available, use an adapter and attach a grounded wire to the tab on the adapter or to the frame of the crusher. Attach the other end of the wire to a proper grounding source.

WARNING! Never cut or remove the round grounding prong from the attachment plug. If an electrical extension cord is needed to be used, be certain that it is a three prong grounding type cord and the wire size is at least #16 AWG and the length does not exceed 10'.

OPERATION

CONTROLS

The control panel in the recessed area on the front of the unit contains an illuminated on-off rocker switch and a 5 AMP circuit breaker to prevent electrical overload of the motor. With the electrical cord plugged into a 115 volt outlet, turn the rocker switch “on”. The rocker switch will become illuminated to indicate that the unit is in “power on” mode.

DISCHARGE CAN CONTAINER

Place an appropriate container, preferably plastic, under the left side of the unit to receive the discharged crushed cans.

CAUTION! Be certain the container does not exceed 14 inches in height. Taller containers can block the crushed can discharge opening when the container is full, causing the crusher to jam.

LOADING THE UNIT

Place cans in the inclined ramp to start the unit in its cycle. (Please note that on initial startup, the unit will not start crushing any cans until the fourth can is put into the inclined ramp.) As long as there is cans in the ramp, the unit will stay in its operating mode. After the last can falls out of the ramp and into the chamber, the crusher will finish the cycle that it is on and return to its “power on/stand-by” mode. (There will always be three (3) uncrushed cans inside the unit at all times after initial startup (two in the chamber and one in front of the plunger).)

Leave the rocker switch on during normal business hours. Turn it off during periods when it will not be attended.

CAUTION! Cans should be empty of any liquid before placed in unit. Badly deformed cans can cause the unit to jam. Pop the cans back to a reasonably round shape before placing them into the unit to prevent problems.

RESETTING THE CIRCUIT BREAKER

The circuit breaker in the panel will trip when the motor of the crusher encounters an electrical overload. When tripped, the white center portion of the breaker, marked with the numeral “5,” will extend approximately ¼”. If the circuit breaker is tripped, let the unit cool for approximately 10 minutes, then push in the white button to resume operation.

NOTE The button will not stay in if the breaker has not cooled sufficiently. If the button does not stay in, wait another 5 minutes and attempt to reset it again. If the unit is put in operation and the breaker trips again, see the Trouble Shooting Section.

MAINTENANCE

CLEANING

The receiving ramp and the top cover should be cleaned daily to remove beverage residue. The sticky residue will retard cans from moving down the ramp easily. Use a damp towel or sponge with a mild detergent, if necessary, to remove the residue.

CAUTION! Do not use abrasive type cleaners on any of the painted surfaces or decals.

Always unplug the power cord when cleaning.

TAB REMOVAL

During the crushing process, tabs may pop off cans. Some will accumulate on top of the ram body where the two cans are retained in the unit. If these tabs are allowed to accumulate too much, the built-in holding feature will no longer function, and two cans may enter the crushing chamber simultaneously. This will likely cause a jam. To remove a tab accumulation, first unplug the electrical power cord. Remove the two cans from the receiving area. With a long flat object, pull the tabs into the can receiving area so they can be removed by hand.

LUBRICATION

The motor is equipped with pre-lubricated bearings and will not require lubrication. If the gear reduction housing on the motor should require re-lubrication, use Amoco type L-industrial 30 grease or its equivalent. The ram body and connecting link to the motor are equipped with pre-lubricated materials and do not require lubrication.

IDENTIFYING JAMS

Can jams in the crushing chamber may be indicated in two ways:

1. The unit continues to operate, but cans are not feeding into receiving chamber. (Badly deformed cans may get turned in such a manner that they will not roll over the ½" ledge at the front edge of the ram body and

drop into the crushing chamber. This ledge is a holding feature for the waiting cans. In normal operation, a can rolls over the ledge on the return stroke of the ram. If this occurs, do not force the can over the ledge by applying pressure on the other cans in the chamber; it will likely enter the crushing chamber in a manner that will cause a more difficult jam to remove. Instead, follow instructions below to properly remove the can.)

2. The motor overload circuit breaker trips repeatedly when re-set.

If two or more cans enter the crushing chamber a jam will result which will stop the operation of the unit by tripping the motor overload circuit breaker.

CLEARING JAMS

To remove either type of jam, first unplug the electrical power cord. Remove the two screws on each side retaining the top cover. Remove the top cover and check the can holding area through the large slot on top and the slots on either side to determine where the jam is located.

If there is a badly deformed can on the ram, use a screwdriver to push it back to the receiving chamber and remove it by hand.

If cans are wedged between the ram and crushing head, reverse the motor by grasping the crank on the motor shaft and turning to remove the pressure on the wedged cans. (Since this is a gear reduction motor, **the shaft will turn hard.**) Use a screwdriver to release them to drop out the discharge chute.

Most jams can be removed without removing the can ramp assembly. However, should it be necessary to remove the can ramp, remove the six (6) Phillip head bolts and lift the assembly off (be careful of the proximity switch cord to not pull it or kink it).

To test the unit prior to replacing the top cover, the white button on the safety switch at the top edge of the rear panel must be depressed.

CAUTION! Exercise extreme caution and every safety measure when operating the unit with the top cover removed. Keep all hands, hair, and loose clothing outside the housing.

REMEMBER Can jams can be virtually eliminated by not putting badly deformed cans into the unit, and by ensuring that the crushed can container does not block the discharge opening when full.

TROUBLESHOOTING

PROBLEM	POSSIBLE CAUSE	SOLUTION
Unit Won't Start	Not connected to a power source	Plug unit into an energized outlet
	Rocker switch not "on"	Turn rocker switch "on"
	Lid safety switch not closed	Make sure lid is properly placed on unit and secured down with screws.
	Motor overload breaker tripped	Reset breaker
	No cans in inclined ramp	Add pre-crushed cans
Unit Runs All The Time When Switch Is "on"	Infeed proximity switch misaligned or defective	Call a certified electrician
	Can lodged in front of infeed proximity switch	Remove lodged can
Motor Overload Keeps Tripping	Bottom proximity switch misaligned or defective	Call a certified electrician
	Inadequate electrical power supply	Make sure outlet is energized with 115 VAC, and, if a power cord is being used, that it is at least a 16 gage AWG cord and not more than 10 feet long
	Can jam in crushing chamber	Unplug unit and remove can jam, if necessary, remove top cover and incline ramp to clear chamber
Frequent Can Jams	Motor or overload breaker defective	Call a certified electrician
	Badly deformed cans	Make sure cans are relatively round when feeding into unit
	Discharge outlet blocked	Remove the blockage below the unit
	Tab build up on top of ram body	See "TAB REMOVAL" in this manual

LIMITED WARRANTY

TROYER BROTHERS, INC. manufacturer of the Monarch Power Can Crusher warrants products of their manufacture to be free from defects in material and workmanship for a period of 12 months after purchase by the end-user. During this warranty period, TROYER BROTHERS, INC.'S obligation under this warranty shall be limited to the repair or replacement, at TROYER BROTHERS, INC'S option, of such product which may prove defective, provided that the product is returned, transportation costs prepaid, to TROYER BROTHERS, INC. Decatur, Indiana; and in no event shall TROYER BROTHERS, INC. be liable for consequential or special damages or for transportation, or other expenses which shall arise in connection with such product. This warranty covers only defects in material or workmanship in normal use and does not cover damages resulting from accident, negligence, misuse, lack of responsible care, alteration, or other unreasonable use. **THIS WARRANTY IS EXPRESSLY IN LIEU OF ANY AND ALL OTHER WARRANTIES, EXPRESS OR IMPLIED. TROYER BROTHERS, INC. MAKES NO WARRANTIES EXPRESS, OR IMPLIED, AS TO MERCHANTABILITY OF THE PRODUCT OR AS TO THE FITNESS OF THE PRODUCT FOR ANY PARTICULAR PURPOSE, AND TROYER BROTHERS, INC. SHALL NOT BE LIABLE FOR ANY LOSS OR DAMAGE, DIRECTLY OR INDIRECTLY, ARISING FROM THE USE OF SUCH PRODUCT OR FOR INCIDENTAL OR CONSEQUENTIAL DAMAGES. TROYER BROTHERS, INC., reserves the right to make changes in products manufactured and/or sold by them at any time without incurring any obligation to make the same or similar changes on products previously manufactured and/ or sold by them. No other representations or warranties have been made by TROYER BROTHERS, INC. or relied upon by the purchaser. No waiver, alteration, or modification of the foregoing warranties shall be valid unless made in writing and signed by an executive officer of TROYER BROTHERS, INC.**

SERVICE OR WARRANTY CONSIDERATION

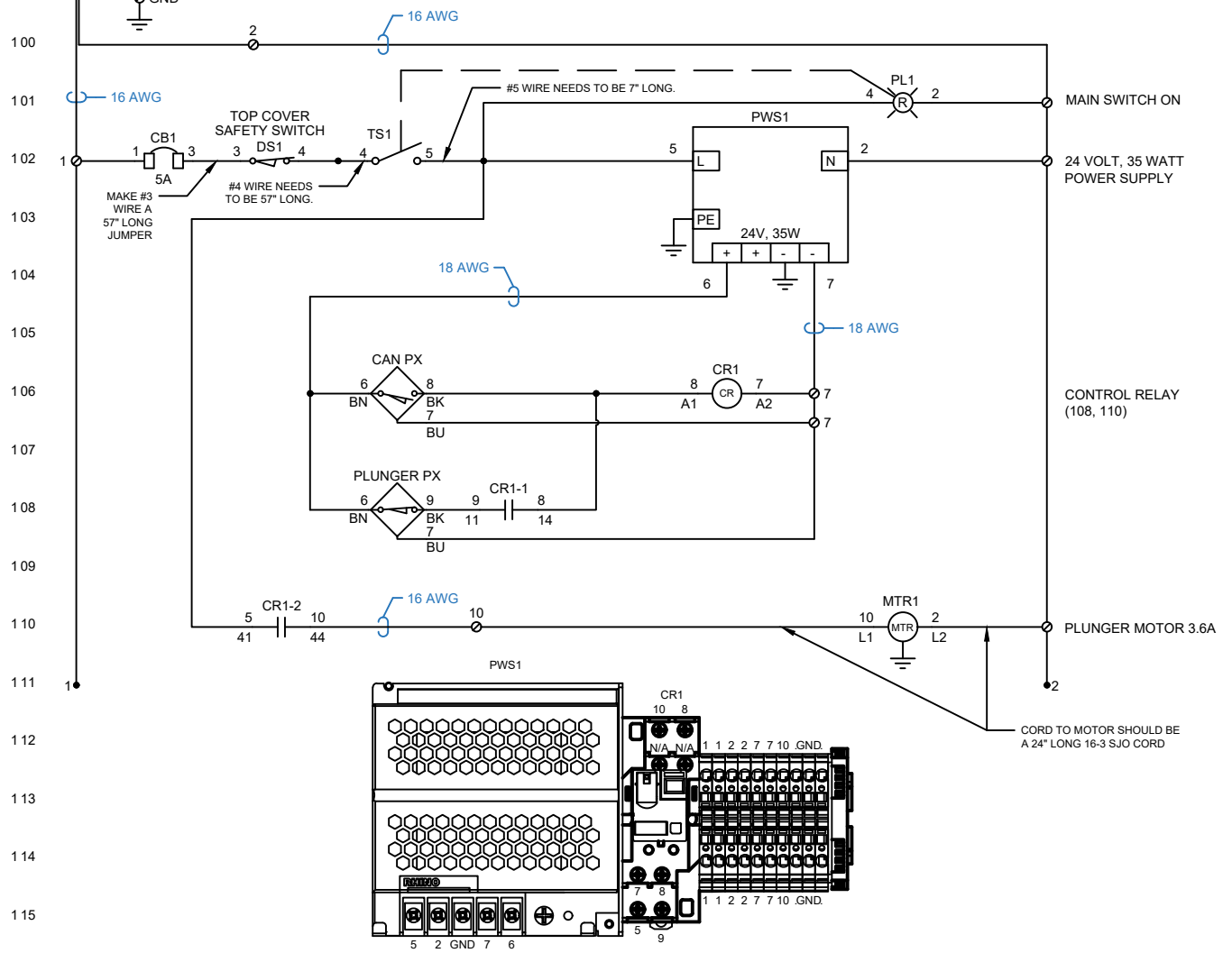
If service or warranty considerations are required, contact the dealer from whom the unit was purchased. In the event local service cannot be obtained, or with further questions, contact:

**TROYER BROTHERS, INC.
6691 W. St. Rd. 124
Decatur, IN 46733
(260)565-2244**


Always contact Troyer Brothers, Inc. before returning any item for Warranty Consideration. Troyer Brothers, Inc. will authorize all necessary returns in writing.

8550 ELECTRICAL SCHEMATICS (115 VAC POWER)

Wire Color Code:
 120 VAC Black
 120 COM White
 Ground Green
 24 VDC+ Blue
 24 VDC- Blue/White



ELECTRICAL BILL OF MATERIALS FOR 8550, 115 VAC MONARCH CAN CRUSHER			
STOCK#	QTY	DESCRIPTION	SYMBOL
8550-P101	5	Terminal Block 2P Jumper	
8550-P102	2	Terminal Block End Bracket	
8550-P103	10	Terminal Block - 24-12 AWG	
8550-P104	1	Terminal Block End Cover	
8550-P105	10	Terminal Block Markers (1-50)	
8550-P106	100mm	Din Rail 35mm W x 7.5mm H x 1M Long	
8550-P107	1	Relay Socket, Din Rail Mount	
8550-P108	1	Control Relay, Ice Cube Type, 24 VDC, DPDT, 15A	CR1
8550-P109	1	Proximity Sensor, Inductive, NC Output, 12mm	PLUNGER PX
8550-P110	1	Proximity Sensor, Inductive, NO Output, 30mm	CAN PX
8550-P111	1	Power supply, Adjustable, 85-264 VAC In, 24 VDC x 35 W Out	PWS1
8550-P112	1	Momentary Snap Action Switch, SPDT, 10 AMP, NO Held Closed	DS1
8550-P113	1	SPST Maintained On-Off Illuminated Rocker Switch	TS1 & PL1
8550-P114	1	5 AMP Mini Circuit Breaker, Push To Reset	CB1
8550-P115	1	AC GearMotor, 115 VAC, 60 HZ, 3.6 AMP, 1/5 HP, CC16-P038	MTR1
8550-P116	1	Power Cord, SJ 16/3 Rubber Sheath, 9' Long, 5-15 Plug	
8550-P117	1	Snap-in Plastic Cord Grip for 0.33"-0.36" OD Cord	



MONARCH
 DIVISION OF TROYER BROTHERS, INC.
 6991 W SR 124
 DECATUR, IN 46733
 www.troyerbrothers.net
 ph: 1-260-565-2244

TOLERANCES (UNLESS OTHERWISE SPECIFIED)

CUSTOMER: _____

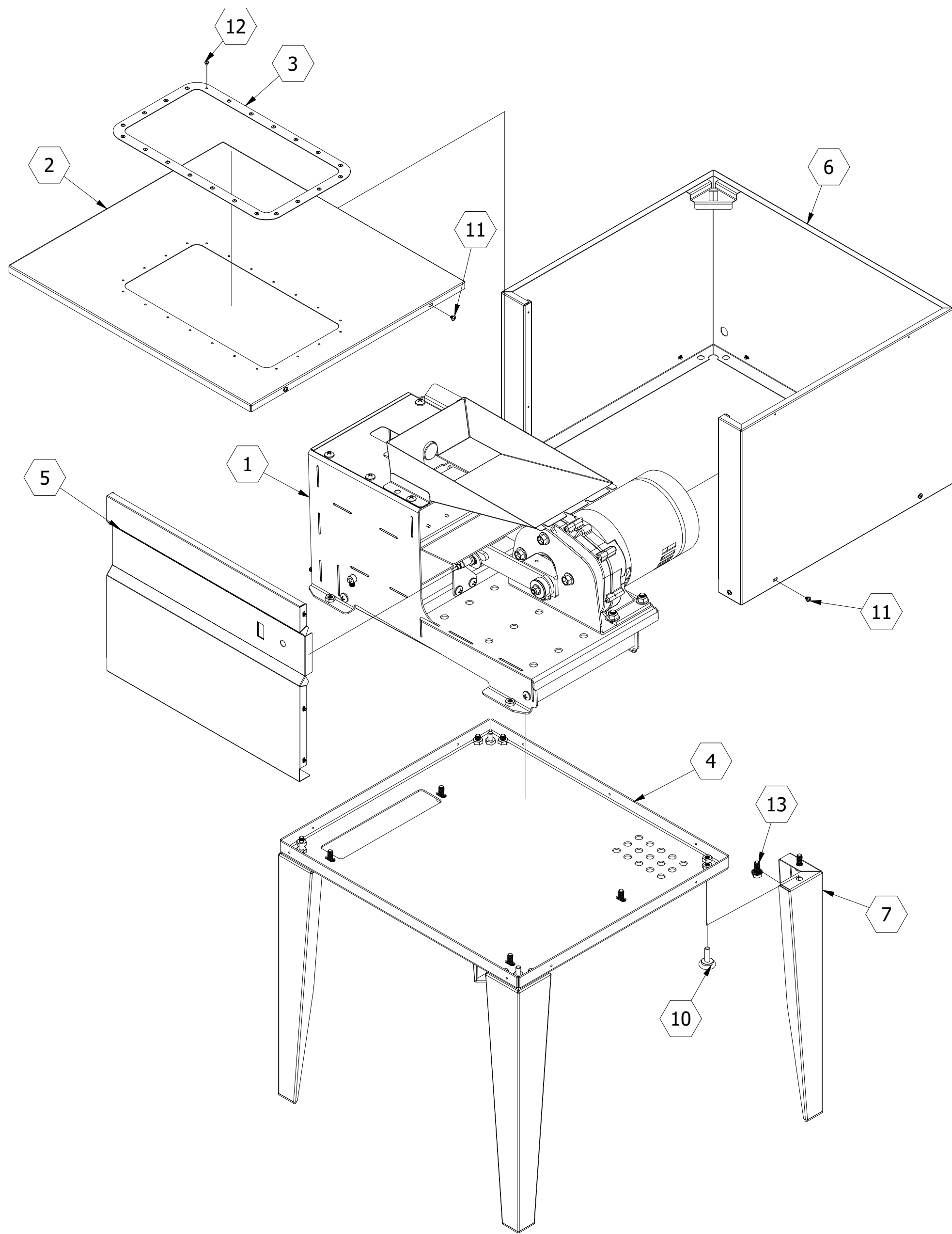
TITLE: ELECTRICAL SCHEMATIC
 SERIES 8550 CAN CRUSHER

SCALE: _____ DRAWN BY: MSI CHECKED BY: ZG APP'D BY: MT

DATE: 25MAR19 SHEET 1 OF SHEETS 1 DRAWING NO. 8550-E001

This print is the property of Monarch It is furnished to you for your intended use. Unauthorized use, duplication, or disclosure without prior consent is strictly forbidden.

MODEL 8550 POWER CAN CRUSHER-STAINLESS STEEL VERSION



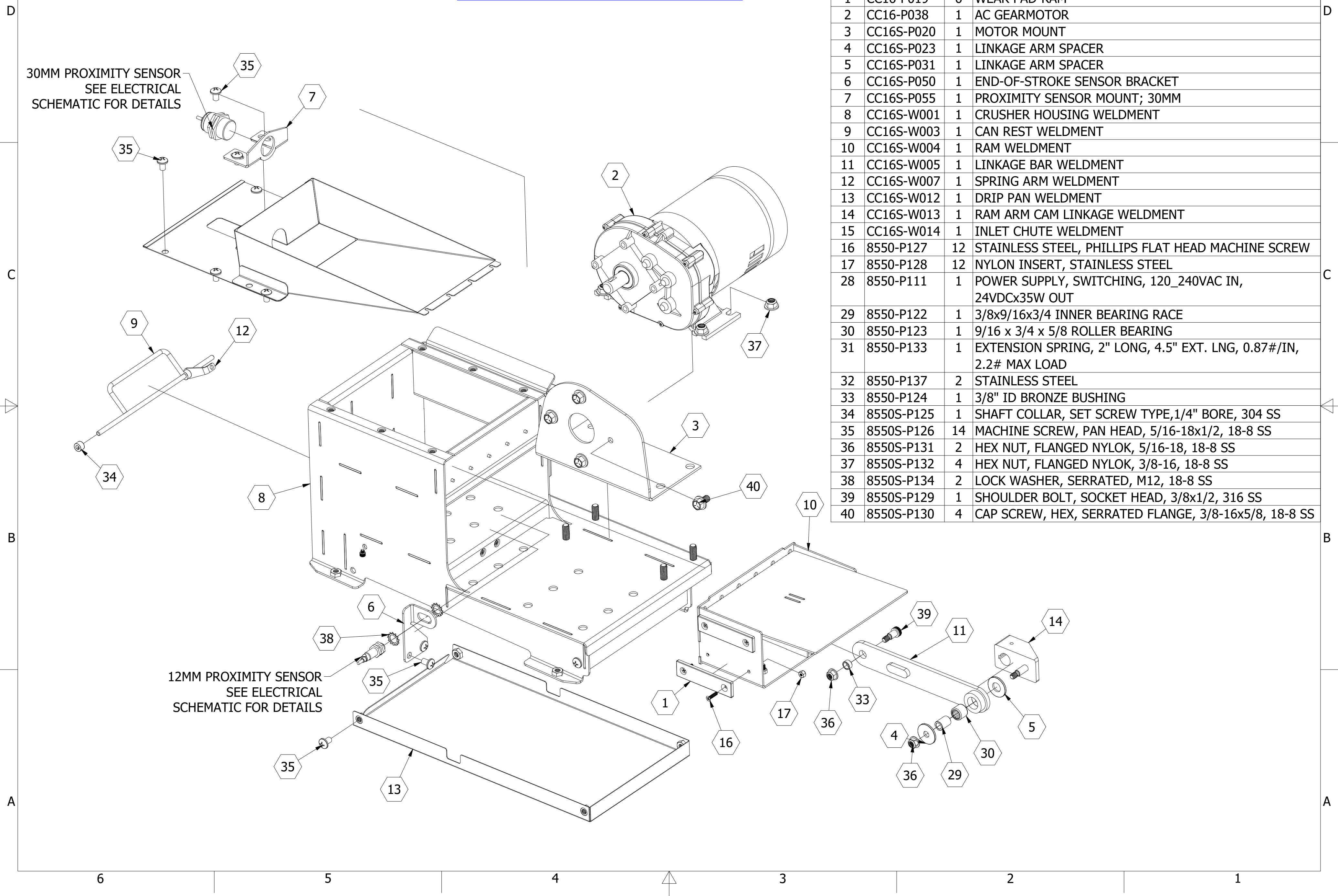
PARTS LIST			
ITEM	STOCK NUMBER	QTY	DESCRIPTION
1	CC16S-A002	1	CRUSHER ASSEMBLY
2	CC16S-P043	1	HOUSING LID
3	CC16S-P044	1	FEED CHUTE COLLAR
4	CC16S-W008	1	HOUSING BASEPLATE WELDMENT
5	CC16S-W009	1	FRONT PANEL WELDMENT
6	CC16S-W010	1	OUTER SHELL WELDMENT
7	CC16S-W011	4	LEG WELDMENT
10	8550-P135	4	LEVELING FOOT, 1 DIA, 5/16-18x1 STUD
11	8550-P136	19	STAINLESS STEEL
12	8550-P121	22	BLIND RIVET, 1/8x1/16, 18-8 SS
13	8550S-P120	12	CAP SCREW, HEX, SERRATED FLANGE, 5/16-18x1, 18-8 SS

MODEL 8550 POWER CAN CRUSHER-STAINLESS STEEL VERSION

30MM PROXIMITY SENSOR
SEE ELECTRICAL
SCHEMATIC FOR DETAILS

12MM PROXIMITY SENSOR
SEE ELECTRICAL
SCHEMATIC FOR DETAILS

PARTS LIST			
ITEM	STOCK NUMBER	QTY	DESCRIPTION
1	CC16-P019	6	WEAR PAD-RAM
2	CC16-P038	1	AC GEARMOTOR
3	CC16S-P020	1	MOTOR MOUNT
4	CC16S-P023	1	LINKAGE ARM SPACER
5	CC16S-P031	1	LINKAGE ARM SPACER
6	CC16S-P050	1	END-OF-STROKE SENSOR BRACKET
7	CC16S-P055	1	PROXIMITY SENSOR MOUNT; 30MM
8	CC16S-W001	1	CRUSHER HOUSING WELDMENT
9	CC16S-W003	1	CAN REST WELDMENT
10	CC16S-W004	1	RAM WELDMENT
11	CC16S-W005	1	LINKAGE BAR WELDMENT
12	CC16S-W007	1	SPRING ARM WELDMENT
13	CC16S-W012	1	DRIP PAN WELDMENT
14	CC16S-W013	1	RAM ARM CAM LINKAGE WELDMENT
15	CC16S-W014	1	INLET CHUTE WELDMENT
16	8550-P127	12	STAINLESS STEEL, PHILLIPS FLAT HEAD MACHINE SCREW
17	8550-P128	12	NYLON INSERT, STAINLESS STEEL
28	8550-P111	1	POWER SUPPLY, SWITCHING, 120_240VAC IN, 24VDCx35W OUT
29	8550-P122	1	3/8x9/16x3/4 INNER BEARING RACE
30	8550-P123	1	9/16 x 3/4 x 5/8 ROLLER BEARING
31	8550-P133	1	EXTENSION SPRING, 2" LONG, 4.5" EXT. LNG, 0.87#/IN, 2.2# MAX LOAD
32	8550-P137	2	STAINLESS STEEL
33	8550-P124	1	3/8" ID BRONZE BUSHING
34	8550S-P125	1	SHAFT COLLAR, SET SCREW TYPE, 1/4" BORE, 304 SS
35	8550S-P126	14	MACHINE SCREW, PAN HEAD, 5/16-18x1/2, 18-8 SS
36	8550S-P131	2	HEX NUT, FLANGED NYLOK, 5/16-18, 18-8 SS
37	8550S-P132	4	HEX NUT, FLANGED NYLOK, 3/8-16, 18-8 SS
38	8550S-P134	2	LOCK WASHER, SERRATED, M12, 18-8 SS
39	8550S-P129	1	SHOULDER BOLT, SOCKET HEAD, 3/8x1/2, 316 SS
40	8550S-P130	4	CAP SCREW, HEX, SERRATED FLANGE, 3/8-16x5/8, 18-8 SS





6691 W. ST. RD. 124

Decatur, IN 46733

(260) 565-2244

Fax (260) 565-4184

Manufacturer of Monarch Can Crusher